



MONTHLY MEMBERSHIP PROGRESS REPORT

District 315B2

Results as of: 12/31/2018

GMT: SWADESH RANJAN SAHA

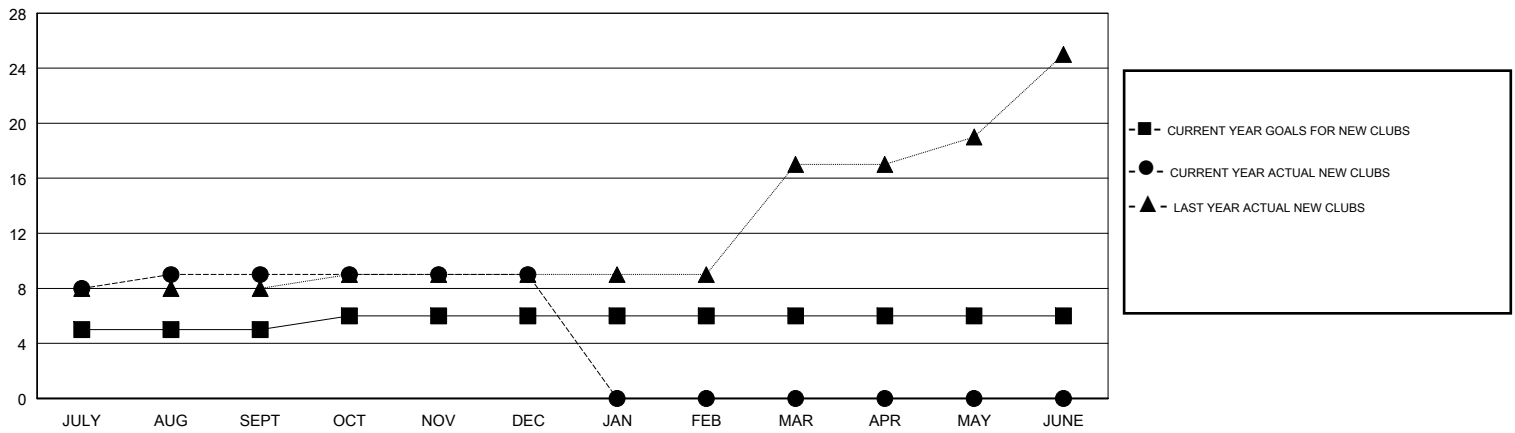
LOCATION REP OF BANGLADESH

GMT CA

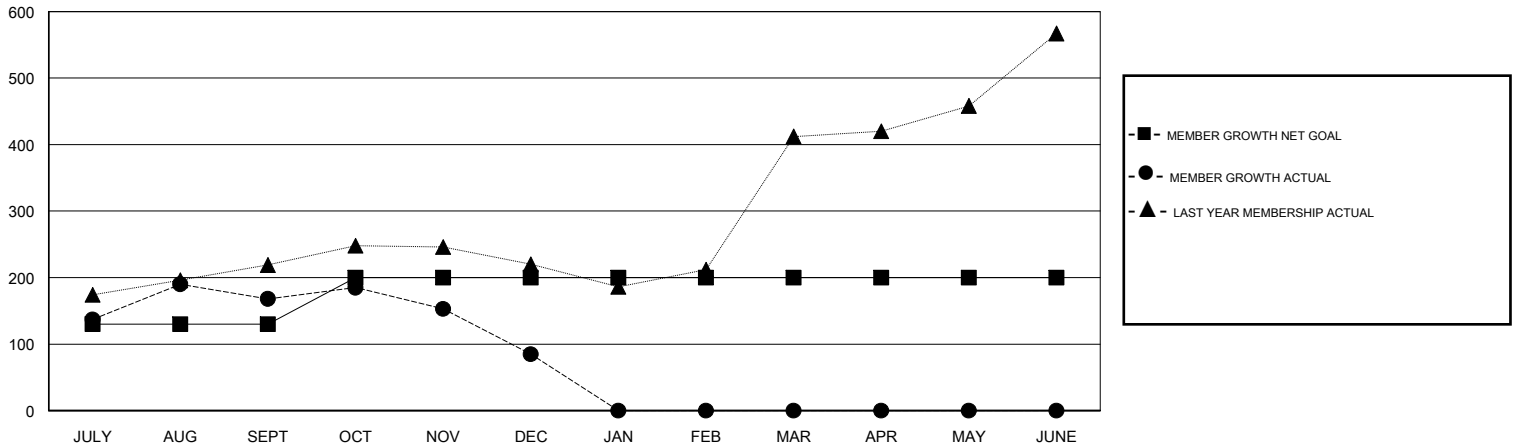
Clubs			
RESULTS FOR 2018-2019			
QUARTER	NEW CLUB GOAL	NEW CLUBS	DROPPED CLUBS
JULY/AUG/SEPT	5	9	2
OCT/NOV/DEC	1	0	3
JAN/FEB/MAR	0	0	0
APR/MAY/JUNE	0	0	0

Members			
RESULTS FOR 2018-2019			
QUARTER	MEMBER GROWTH NET GOAL	MEMBER GROWTH ACTUAL	DROPPED MEMBERS ACTUAL (including transfers)
JULY/AUG/SEPT	130	263	93
OCT/NOV/DEC	70	31	114
JAN/FEB/MAR	0	0	0
APR/MAY/JUNE	0	0	0

GOALS AND ACTUAL NEW CLUBS CUMULATIVE



GOALS AND ACTUAL MEMBERS CUMULATIVE



DROPPED CLUBS: 5

39 CLUBS OF 98 ADDED 1 OR MORE NEW MEMBERS

GENDER DISTRIBUTION	
MALE	1,853 (78.78%)
FEMALE	499 (21.22%)
Women Percentage Fiscal Year Goal: 30%	

DROPPED MEMBERS	
DECEASED	5
CLUB CANCELLED	125
OTHER	77
TOTAL	207

[CLICK HERE FOR CUMULATIVE MEMBERSHIP DATA](#)

TOTAL FAMILY UNIT MEMBERS	781
FAMILY MEMBERS PAYING HALF DUES	494